



Les Boutiques

Every Little Thing She Does Is Magic

Manual v1.1

© *LithiumGrim Effects* 2022

Table of Contents

Operating Power.....	3
Basic Settings	4
Royal Tone	4
Horse Majeur	5
Merlin	6
Advanced Settings	7
Royal Tone	7
Horse Majeur	7
Merlin	7
Order switching (optional)	8
Default gain stacking	8
John Mayer chain	8
True bypass Horse Majeur	8
Default settings	9

Operating Power

Only use a regular **+9V DC Adapter (Negative center)**. Do not use a different adapter (12V/18V) as it will void any warranty.



The *Les Boutiques* effect consists of 3 separate pedals that can be individually switched and also have their own switching options. Be warned that turning all 3 effects to maximum gain may result in it squealing like a pig depending on how clean your DC adapter is (it will at best amplify all the noise in your signal chain for a hissing extravaganza). However, the effects are perfect for stacking and by doing so creating eternal feedback that Gary Moore and Billy Gibbons love(d) to ride like a wave.

The individual effects from right to left:

- ***Royal Tone***
Inspired by the Prince of Tone (1/2 a King of Tone) by Analogman, which itself is based on the Marshall Blues Breaker.
- ***Horse Majeur***
Inspired by the Klon Centaur by Bill Finnigan.
- ***Merlin***
Inspired by the Tim(my) by Paul Cochran, which in essence is a stripped down and tweaked version of a Tube Screamer.

This effect is a fully tricked out pedal, a true options galore. However, pretty as that might be, it might also scare some users off. To keep the pedal accessible for *all* users, we split the manual up into 2 sections: **Basic** (external pots and switches) and **Advanced** (internal switches). You can stick to the basic settings and only read the advanced settings if you are interested in more in depth tweaking.

Basic Settings

Royal Tone

This is the lowest driving Overdrive of the 3 and is on the **Green** channel.

Volume, Drive and Tone are the same as in other pedals. Presence can create some top end sparkle.

Headroom

The Headroom switch (+9V/+18V) gives the effect, at 18V, a longer breath before overdriving the signal. Some may perceive it as more transparent sounding.

Clipping

The clipping switch gives you the choice between 3 settings:

- **OD (OverDrive)** ⁽¹⁾
This adds the 4 symmetrical soft clipping diodes to the feedback loop of the second opamp stage of the effect. Gives a warm overdrive.
- **None**
No clipping diodes in the signal path of the effect, so all clipping comes only from the second opamp stage. Compares best to a clean boost.
- **Distortion**
Adds 2 hard clipping diodes after the second opamp stage. Gives a bit harsher overdrive/distortion.

Note:

1. This is a low gain overdrive. Only with the drive at 3 o'clock (75%) and volume at around noon (50%) will you notice the signal breaking up. This is normal.
2. Adding too much presence can make the effect harsh sounding. By default turn the presence knob off and only add when needed.



¹ Default setting

Horse Majeur

This is best used as a Low to Mid Gain overdrive and is on the **Orange** channel.

Volume, Gain and Treble are the same as in other pedal. The original effect only has a Gain potentiometer (pot) that actually is a stereo pot that internally controls both Gain and Blend at the same time. Turning the Gain knob up results off course in more gain, but also turns down the overall added clean signal, while turning the gain down lowers the gain and also lets more of the clean signal remain.



In the *Les Boutiques* effect the pot is split into separate Gain and Blend. You can now determine in every Gain setting how much of the clean signal you want to let bleed through. If you turn the Blend knob to the same position as the Gain knob, it will act as the Gain knob on the original.

Diodes

The diode selection switch gives you the option between 3 flavors:

- **Germanium** ⁽¹⁾
Warm vintage overdrive sound
- **None**
More of a Clean boost setting. Notice the raised volume in this setting.
- **Silicon**
Slightly compressed setting but still leaves enough top end.

Merlin

This is best used as a Mid to High Gain overdrive and is on the **Red** channel.

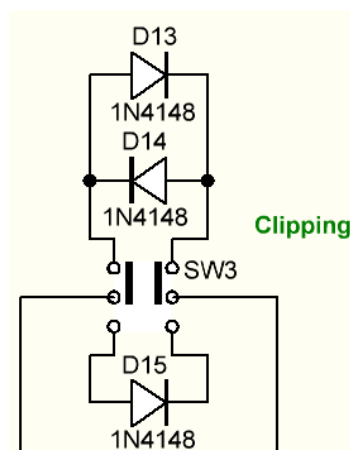
Volume, Gain, Treble and Bass are the same as in other pedals although Treble may work in a reverse order than you would expect.

Headroom

The Headroom switch (+9V/+18V) gives the effect, at 18V, a longer breath before overdriving the signal. Some may perceive it as more transparent sounding.

Clipping Symmetry

Enables you to switch between the normally internal switching options of the original. As this effect has a lot of diode switching options, here is a snippet from the schematic:



- **A-Sym(metrical)**
Adds an extra single clipping diodes to the circuit. A-symmetrical will be slightly louder, cleaner and with a bit more headroom.
- **Stock** ⁽¹⁾
- **Sym(metrical)**
Adds 2 extra clipping diodes to the circuit. Symmetrical will sound smoother and a bit more compressed, but less compressed than the stock setting

Advanced Settings

Besides external pots and switching options as described in the Basic settings, you can open the lid by unscrewing the 6 screws, to reveal extra *DIP switching* options. These settings are for advanced users who like to tweak the pedal a bit more. A DIP switch has 2 positions. Up = On, Down = Off, but that is also marked on the switch itself.

Royal Tone



Gain

Enables you to switch between the stock Drive potentiometer value (100k) and the High Gain potentiometer value (250k).
Default = *Off* = High Gain

Symmetry

Enables you to switch between the stock symmetrical clipping and a-symmetrical clipping. Symmetrical will sound smoother and a bit more compressed, while a-symmetrical will be slightly louder and cleaner.
This switch only functions if the external clipping switch is set to the OD mode!
Default = *Off* = Symmetrical.

Horse Majeur



Fat switch

When switching this on, you will get more bass through the second opamp.
Default = *Off* = Stock Bass

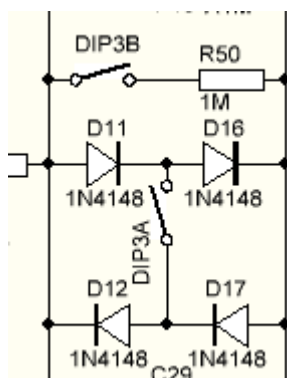
Tone response

When switching this on, the treble knobs frequency operation range will shift a bit and leave more bass in the signal.
Default = *Off* = Stock Treble

Merlin



Here is another piece of the schematic:



Stock/BB style

In stock all 4 diodes are connected in the center, while in BB-style (Blues Breaker) they are not (DIP2A in the picture).
Default = *On* = Stock.

High Gain

Default = *On* = Stock Gain

On the footswitch PCB there are 3 trim pots, one for each effect. You should not need to use these unless you think the "pop" you hear when switching on an effect is too loud. If the pop is caused by the LED switching on, you can turn the trimpot of that effect to see if it goes away.

Order switching (optional)

If your version of the Les Boutiques comes with order switching, you can customize the order of the effects chain.

Default gain stacking

Default both switches (see picture below) are set to **1-2-3**. This way you will have the following signal chain:

Guitar -> *Royal tone* -> *Horse Majeur* -> *Merlin* -> **Amp**

This is a standard way of stacking low to high gain.

John Mayer chain

John plays its TS10 into a Klon, using the TS set as a pretty clean boost. To enable you to use this chain order with your *Les Boutiques*, you should set both order switches to **3-2-1**. This will create the following signal chain:

Guitar -> *Merlin* -> *Horse Majeur* -> *Royal tone* -> **Amp**

You can now use the Royal tone as a solo boost.

Warning: Both switches need to be set in the same order configuration!



True bypass Horse Majeur

The Horse Majeur can be switched between *Buffered Bypass* (default) and *True bypass* by flipping the switch on the Footswitch PCB. There will be a noticeable volume drop when switching from buffered bypass to true bypass. This is normal.



Default settings



If you have any questions or requests, please contact me at arnold.dikstaal@gmail.com.