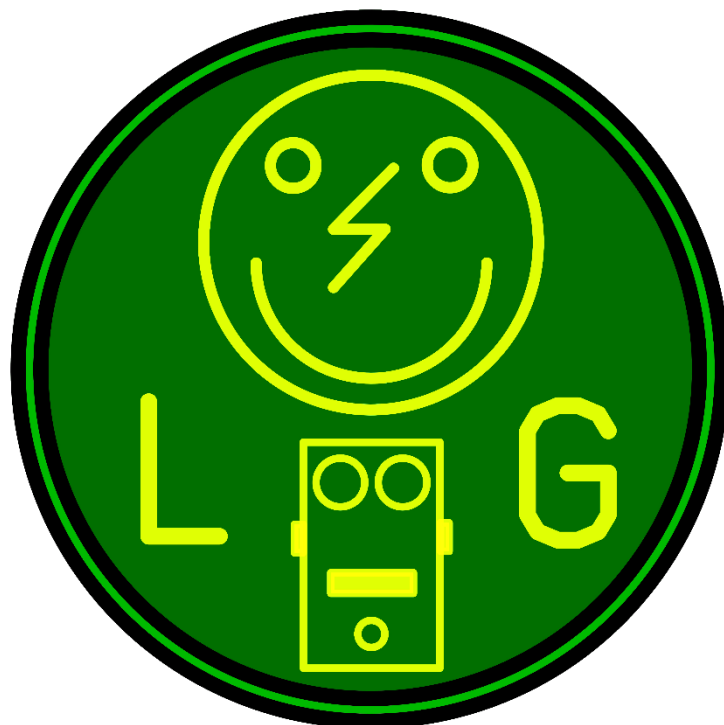


SOT-23 > SIP-3

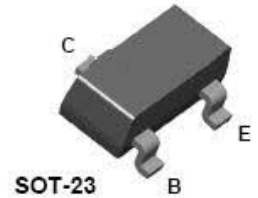
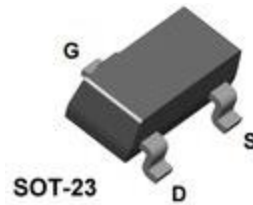
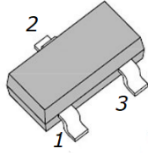
Building instructions

V1.0

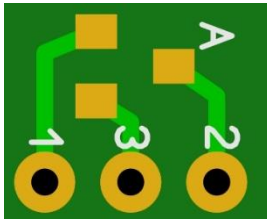




There are 3 different types of converters (A,B and C) on 2 different mini PCBs (front A/back B and front A/back C). The goal is to enable you to use this converter for every legacy build you have. The pinout used on these PCB's is as follows:



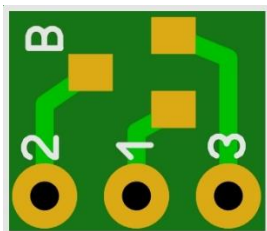
Type A



Converts a MMBFJ201 to D-S-G (or G-S-D) as used in the TO-92 version of the J201.

Also converts to B-E-C (or C-E-B)

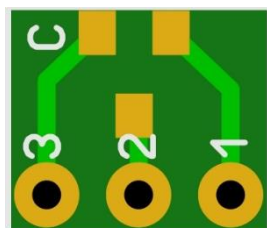
Type B



Converts a MMBT5088 to C-B-E (or E-B-C) as used in the TO-92 version of the 2N5088.

Also converts to G-D-S (or S-D-G)

Type C



Converts to E-C-B (or B-C-E) pinout or S-G-D (or D-G-S)

Soldering

If you do not have SMT/SMD equipment and paste, it is best to pre-solder 1(!!) pad on the PCB, then put the SOT-23 transistor in place, heat up the solder and keep the transistor in place. If it is placed correct, let it cool a bit and then solder the other 2 pads.