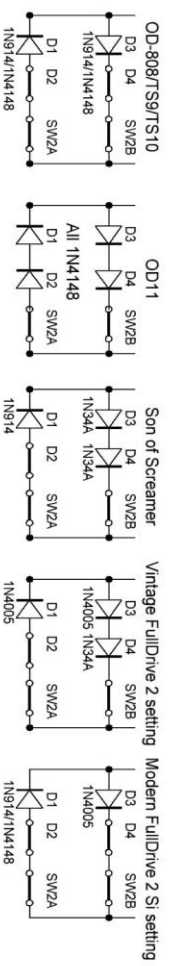


# OmniScreamer v1.0 configuration sheet

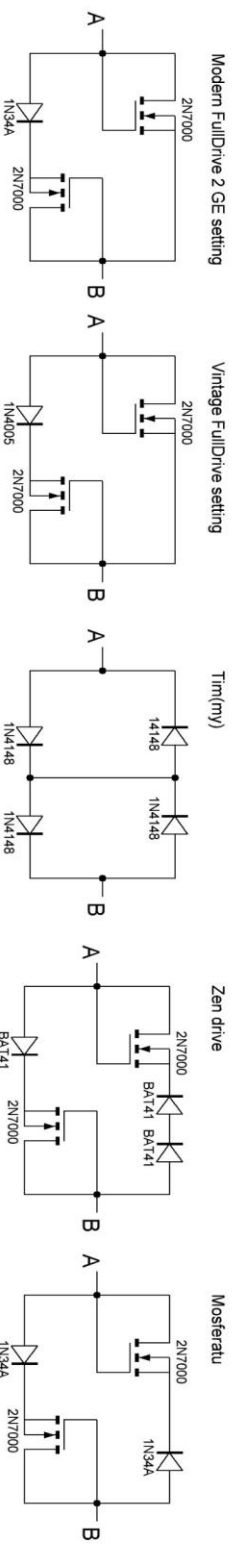
ID	Maxon	Ibanez	Lovepedal			Hermida	Paul Cochorane		Jack Orman	Grand Laff	BlackmarketFX	Visual Studio
	OD-808	TS9	Kalamazoo	OD-11	Zen drive	Mosferatu	Tim	Timmy	Son of Screamer	Dynamic OD	Clay Jones OD	Hyde
C1	x	x	x	x	x	x	x	x	x	x	x	x
C2	27n	27n	x	x	x	x	x	x	x	20n	20n	22n
C3	1u	1u	47n	47n	470n	470n	47n	47n	50n	1u	1u	1u
C4	51p	51p	x	100p	100p	100p	100p****	100p****	47p	51p	51p	51p
C5	47n	47n	100n	33n	x	270n	39n	39n	50n	220n	220n	68n
C6	x	x	x	1u	100n	x	1u	1u	x	x	x	x
C7	x	x	x	x	x	x	150n	x	x	x	x	x
C8	220n***	220n***	150n	47n	3n3	270n	10n	10n	220n	220n	220n	220n
C9	220n***	220n***	220n	x	x	270n	x	x	220n	220n	220n	220n
C10	x	x	x	x	jump	x	4n7	x	x	x	x	x
C11	1u	1u	10u	1u	470n	470n	1u	1u	1u	1u	1u	1u
C12	100n	100n	x	x	x	jump	x	x	x	100n	100n	100n
C13	10u	10u	x	x	x	jump	x	x	x	10u	10u	10u
C14	x	x	x	x	x	x	x	x	x	x	x	x
C15	x	x	x	x	x	x	x	x	x	x	x	x
C16	100u	100u	47u	47u	100u	100u	47u	47u	47u	100u	100u	100u
C17	100n	100n	100n	100n	x	x	x	x	x	x	x	x
C18	47u	47u	47u	47u	47u	47u	47u	47u	47u	47u	47u	100u
D1	1N914	1N914	1N914	1N4148	x	x	x	1N914	1N914	x	LED red 3mm	1N4148
D2	jump	jump	1N914	1N4148	x	x	x	jump	jump	x	jump	jump
D3	1N914	1N914	1N914	1N4148	x	x	x	1N914	1N34A	x	LED red 3mm	1N4148
D4	jump	jump	1N914	1N4148	x	x	x	jump	1N34A	x	jump	jump
D5*	1N5817	1N5817	1N5817	1N5817	1N5817	1N5817	1N5817	1N5817	1N5817	1N5817	1N5817	1N5817
IC1	JRC4558P	JRC4558P	JRC4558P	JRC4558P	AD712	AD712	JRC4559	JRC4559	TL072	JRC4558P	OPA2134	JRC4558P
P1	x	x	x	B50k	B10k	x	B50k	B50k	x	x	x	x
P2	A500k	A500k	B500k	B500k	B500k	B500k	A500k	A1M	B500k	A1M	A1M	B500k
P3	x	x	x	x	x	x	A10k	x	x	x	x	x
P4	x	x	x	x	x	x	A10k	x	x	x	x	x
P5	x	x	B5k	B5k	B50k	x	B50k	B50k	x	x	x	x
P6	W20k	W20k	B5k	x	x	B25k	x	x	B25k	B25k	B25k	A20k
P7	B100k	B100k	B100k	B10k	A100k	B100k	B10k	B10k	A100k	B100k	B100k	B100k
Q1	25C1815	25C1815	x	x	x	x	x	x	x	25C1815	BC546B	MPSA18
Q2	25C1815	25C1815	x	x	x	jump B-E	x	x	x	25C1815	BC546B	MPSA18
R1	x or 2M2	x or 2M2	x	x	x	x	x	x	x	x	x	x
R2	1k	1k	x	x	x	x	x	x	x	1k	1k	10k
R3	510k	510k	x	x	x	x	x	x	x	510k	510k	470k
R4	10k	10k	x	x	x	x	x	x	x	10k	10k	10k
R5	x	x	1M	1M	2M	1M	2M2	2M2	x	x	x	x
R6	10k	10k	1M	1M	470k	470k	510k	470k	470k	10k	10k	10k
R7	4k7	4k7	3k3	3k3	1k	1k	3k3	3k3	4k7	1k	1k	3k3
R8	51k	51k	10k	3k3	jump	jump	jump	jump	47k	10k	10k	27k
R9	jump	jump	jump	jump	1k	1k	3k3	3k3	jump	jump	jump	jump
R10	x	x	x	x	x	x	330R	x	x	x	x	x
R11	jump	jump	2k74	x	x	jump	x	x	jump	jump	jump	jump
R12	1k	1k	1k	1k5	10k	1k	1k5	1k5	1k	1k	1k	1k
R13	10k	10k	x	x	x	x	x	x	x	10k	10k	10k
R14	220R	220R	332R	x	x	220R	x	x	220R	220R	220R	220R
R15	1k	1k	1k	3k3	x	1k	3k3	3k3	1k	1k	1k	1k
R16	x	x	x	3k3	x	x	3k3	3k3	x	x	x	x
R17	jump	jump	jump	jump	1k	1k	jump	jump	jump	1k	1k	1k
R18	510k	510k	x	x	x	x	x	x	x	510k	510k	470k
R19	10k	10k	x	x	x	x	x	x	x	10k	10k	10k
R20	100R	470R	x	x	x	jump	x	x	x	100R	100R	100R
R21	10k	100k	x	x	x	1M	x	x	x	10k	10k	10k
R22	x	x	x	x	x	x	x	x	x	x	x	x
R23	10k	10k	10k	10k	10k	10k	8k2	8k2	10k	10k	10k	47k
R24	10k	10k	10k	8k2	10k	10k	10k	10k	10k	10k	10k	47k
SW1	DPDT	DPDT	jump 2-5	jump 2-5	jump 2-5	jump 2-5	jump 2-5	jump 2-5	jump 2-5	DPDT	DPDT	DPDT
SW2	jump	jump	jump	jump	x	x	x	DIP2	jump	x	jump	jump
SW3	x	x	x	x	x	x	SPDT	x	x	x	x	x
SW4	DPDT	DPDT	jump 2-5	jump 2-5	jump 2-5	jump 2-3/5-6	jump 2-5	jump 2-5	jump 2-5	DPDT	DPDT	DPDT
SW5	x	x	x	x	**	**	**	**	x	**	x	x
SW6	x	x	x	x	x	x	x	x	x	x	x	x

\* misprinted on PCB as D3 under C10  
 \*\* see offboard clipping section in the building instructions  
 \*\*\* Tantalum  
 \*\*\*\* Silver Mica

## Onboard clipping suggestions



## SWS off board suggestions

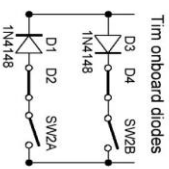


No onboard diodes

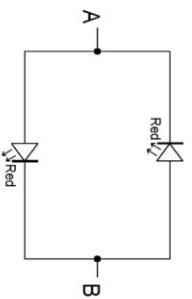
No onboard diodes

No onboard diodes

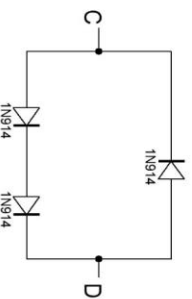
No onboard diodes



Dynamic OD setting 1



Dynamic OD setting 2



## SWS layout (DPDT On-Off-On)

