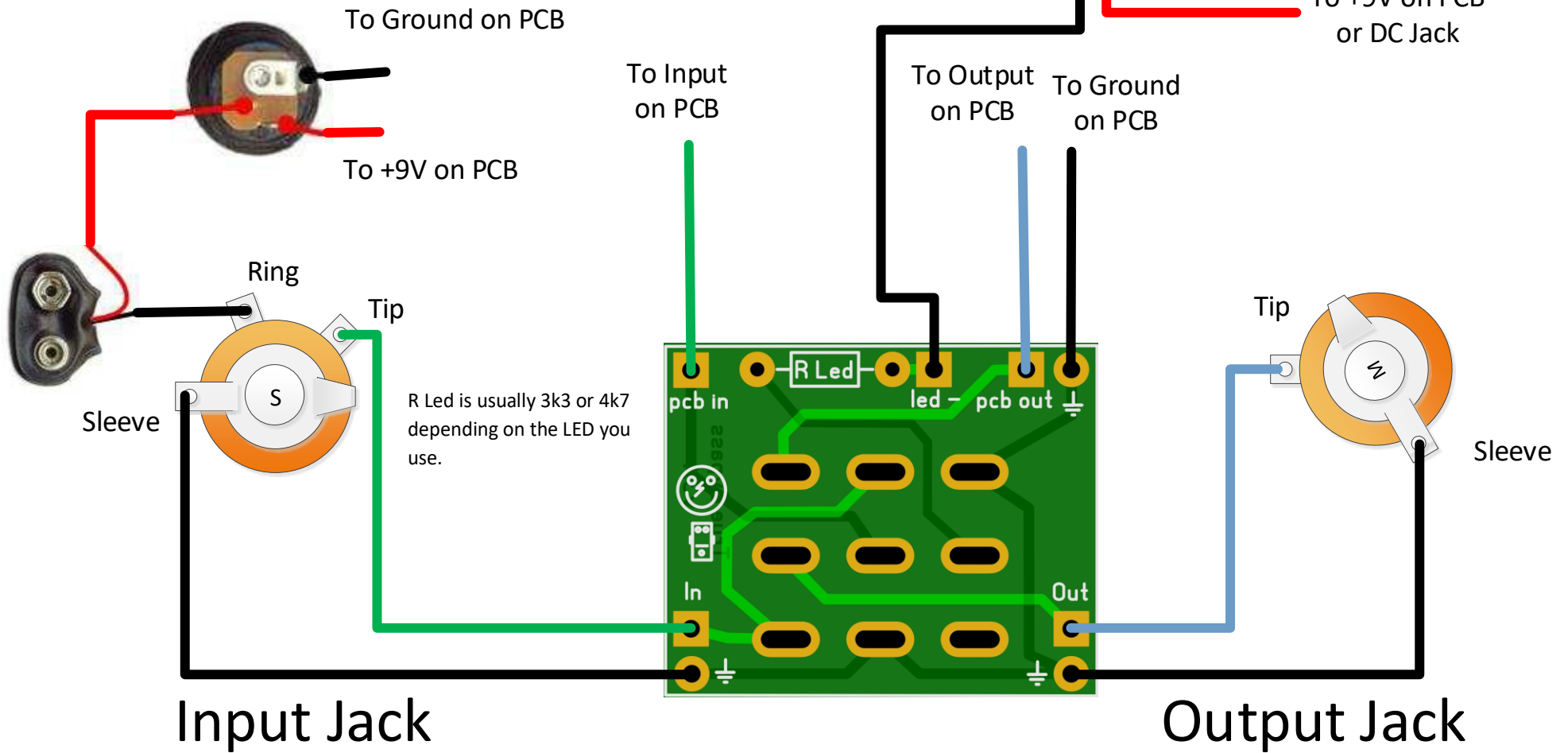




V3.1



When patching 2 effects together then connect Out from effect A to In from effect B.

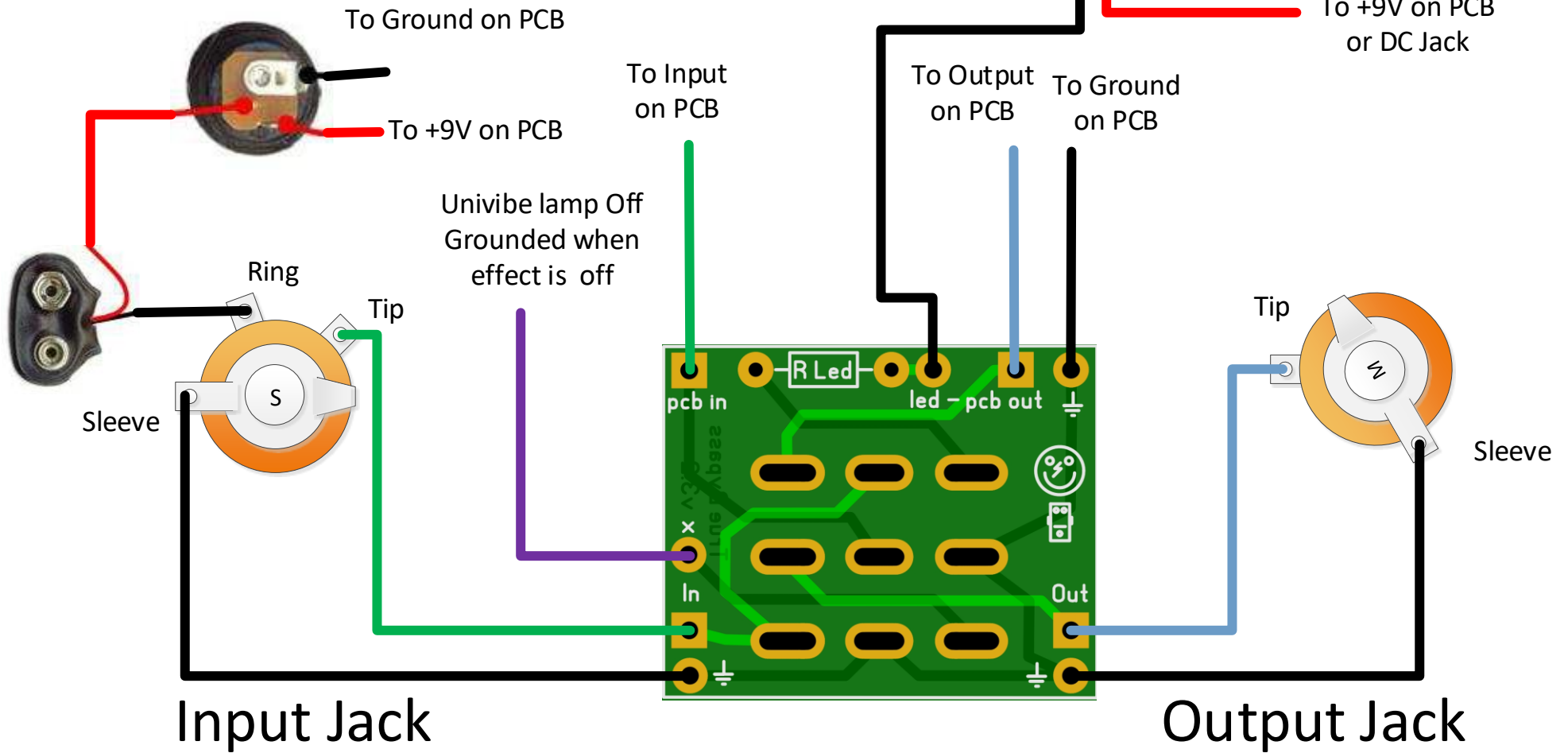


R Led is usually 3k3 or 4k7 depending on the LED you use.

## V3.2

Added Univibe lamp switch

V3.2.1 added extra optional ground pad



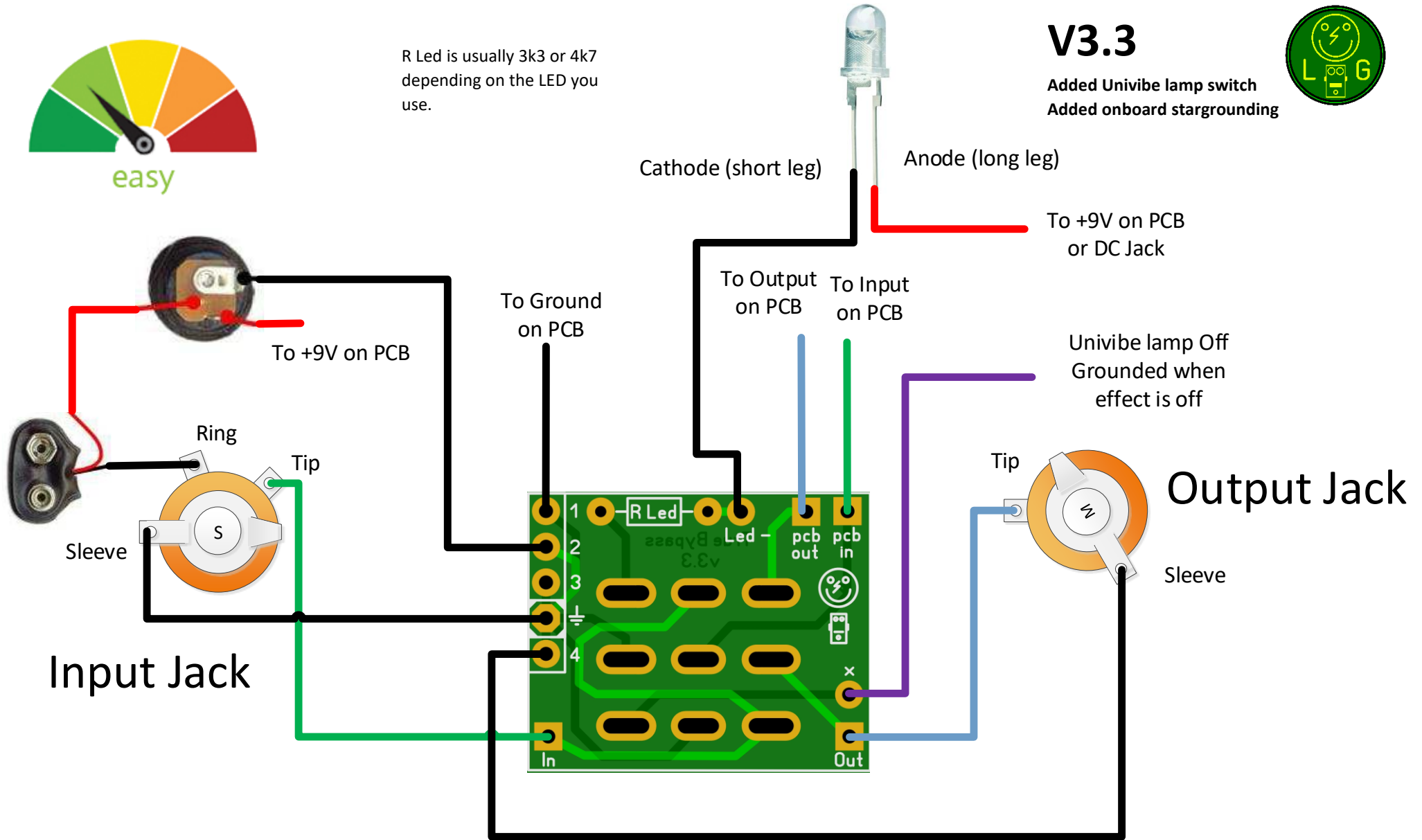
When patching 2 effects together then connect Out from effect A to In from effect B.



R Led is usually 3k3 or 4k7 depending on the LED you use.

### V3.3

Added Univibe lamp switch  
Added onboard stargrounding



When patching 2 effects together then connect Out from effect A to In from effect B.